

THE BAROSSA TRAIL

There is no better way to explore Barossa's hand crafted wines, distinctive regional food, wine and rich heritage than by bike. The Barossa Trail is a high-quality sealed cycling and walking network extending 40 kilometres from Angaston to Gawler via the three main townships of Nuriootpa, Tanunda and Lyndoch.

This network extends to surrounding towns leading travellers on a journey of discovery. Rural landscapes and hidden attractions and expansive views.

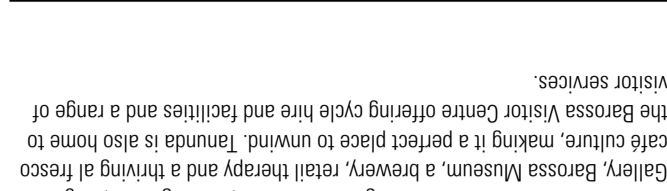
SATC

SATC

BAROSSA BY BIKE



TRAIL GRADES



The town features historic buildings and churches, Heritage Trail, Regional Gallery, Barossa Museum, a brewery, retail therapy and a thriving alfresco cafe culture, making it a perfect place to unwind. Tanunda is also home to the Barossa Visitor Centre offering cycle hire and facilities and a range of visitor services.

Nuriootpa is the commercial hub of the Barossa and central to the region's wine production. 'Nurt' as it's locally known offers a diversity of retail outlets, eateries, and a scenic riverside walk through Linear Park.

People venturing off the path will discover many attractions for visitors and families, including Barossa Bushgardens native plant nursery and display gardens, Mengler Hill Sculpture Park, Barossa Farmers Market (held each Saturday morning) and a variety of cellar doors.

Offering ample parking, the historic Angaston Railway Station was completed in 1911 and is listed as a State Heritage Place. From here it's an easy descent to Nuriootpa, affording panoramic views over the Valley floor and rolling vineyards that symbolise the Barossa.

Home to a variety of cafes, a bike shop, cheesemaker, Italian cooking school, wine bars, cellar doors, B&Bs and boutique retailers.

Angaston is one of the region's highest townships and home to a variety of cafes, a bike shop, cheesemaker, Italian cooking school, wine bars, cellar doors, B&Bs and boutique retailers.

People venturing off the path will discover many attractions for visitors and families, including Barossa Bushgardens native plant nursery and display gardens, Mengler Hill Sculpture Park, Barossa Farmers Market (held each Saturday morning) and a variety of cellar doors.

Offering ample parking, the historic Angaston Railway Station was completed in 1911 and is listed as a State Heritage Place. From here it's an easy descent to Nuriootpa, affording panoramic views over the Valley floor and rolling vineyards that symbolise the Barossa.

Home to a variety of cafes, a bike shop, cheesemaker, Italian cooking school, wine bars, cellar doors, B&Bs and boutique retailers.

Angaston is one of the region's highest townships and home to a variety of cafes, a bike shop, cheesemaker, Italian cooking school, wine bars, cellar doors, B&Bs and boutique retailers.

People venturing off the path will discover many attractions for visitors and families, including Barossa Bushgardens native plant nursery and display gardens, Mengler Hill Sculpture Park, Barossa Farmers Market (held each Saturday morning) and a variety of cellar doors.

Offering ample parking, the historic Angaston Railway Station was completed in 1911 and is listed as a State Heritage Place. From here it's an easy descent to Nuriootpa, affording panoramic views over the Valley floor and rolling vineyards that symbolise the Barossa.

Home to a variety of cafes, a bike shop, cheesemaker, Italian cooking school, wine bars, cellar doors, B&Bs and boutique retailers.

Angaston is one of the region's highest townships and home to a variety of cafes, a bike shop, cheesemaker, Italian cooking school, wine bars, cellar doors, B&Bs and boutique retailers.

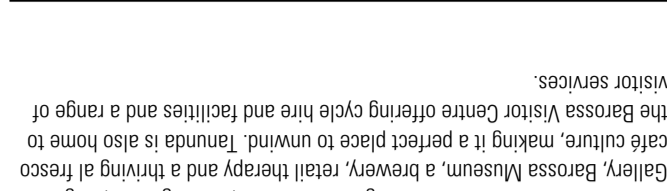
People venturing off the path will discover many attractions for visitors and families, including Barossa Bushgardens native plant nursery and display gardens, Mengler Hill Sculpture Park, Barossa Farmers Market (held each Saturday morning) and a variety of cellar doors.

Offering ample parking, the historic Angaston Railway Station was completed in 1911 and is listed as a State Heritage Place. From here it's an easy descent to Nuriootpa, affording panoramic views over the Valley floor and rolling vineyards that symbolise the Barossa.

Home to a variety of cafes, a bike shop, cheesemaker, Italian cooking school, wine bars, cellar doors, B&Bs and boutique retailers.

Angaston is one of the region's highest townships and home to a variety of cafes, a bike shop, cheesemaker, Italian cooking school, wine bars, cellar doors, B&Bs and boutique retailers.

TRAIL GRADES



The town features historic buildings and churches, Heritage Trail, Regional Gallery, Barossa Museum, a brewery, retail therapy and a thriving alfresco cafe culture, making it a perfect place to unwind. Tanunda is also home to the Barossa Visitor Centre offering cycle hire and facilities and a range of visitor services.

Nuriootpa is the commercial hub of the Barossa and central to the region's wine production. 'Nurt' as it's locally known offers a diversity of retail outlets, eateries, and a scenic riverside walk through Linear Park.

People venturing off the path will discover many attractions for visitors and families, including Barossa Bushgardens native plant nursery and display gardens, Mengler Hill Sculpture Park, Barossa Farmers Market (held each Saturday morning) and a variety of cellar doors.

Offering ample parking, the historic Angaston Railway Station was completed in 1911 and is listed as a State Heritage Place. From here it's an easy descent to Nuriootpa, affording panoramic views over the Valley floor and rolling vineyards that symbolise the Barossa.

Home to a variety of cafes, a bike shop, cheesemaker, Italian cooking school, wine bars, cellar doors, B&Bs and boutique retailers.

Angaston is one of the region's highest townships and home to a variety of cafes, a bike shop, cheesemaker, Italian cooking school, wine bars, cellar doors, B&Bs and boutique retailers.

People venturing off the path will discover many attractions for visitors and families, including Barossa Bushgardens native plant nursery and display gardens, Mengler Hill Sculpture Park, Barossa Farmers Market (held each Saturday morning) and a variety of cellar doors.

Offering ample parking, the historic Angaston Railway Station was completed in 1911 and is listed as a State Heritage Place. From here it's an easy descent to Nuriootpa, affording panoramic views over the Valley floor and rolling vineyards that symbolise the Barossa.

Home to a variety of cafes, a bike shop, cheesemaker, Italian cooking school, wine bars, cellar doors, B&Bs and boutique retailers.

Angaston is one of the region's highest townships and home to a variety of cafes, a bike shop, cheesemaker, Italian cooking school, wine bars, cellar doors, B&Bs and boutique retailers.

People venturing off the path will discover many attractions for visitors and families, including Barossa Bushgardens native plant nursery and display gardens, Mengler Hill Sculpture Park, Barossa Farmers Market (held each Saturday morning) and a variety of cellar doors.

Offering ample parking, the historic Angaston Railway Station was completed in 1911 and is listed as a State Heritage Place. From here it's an easy descent to Nuriootpa, affording panoramic views over the Valley floor and rolling vineyards that symbolise the Barossa.

Home to a variety of cafes, a bike shop, cheesemaker, Italian cooking school, wine bars, cellar doors, B&Bs and boutique retailers.

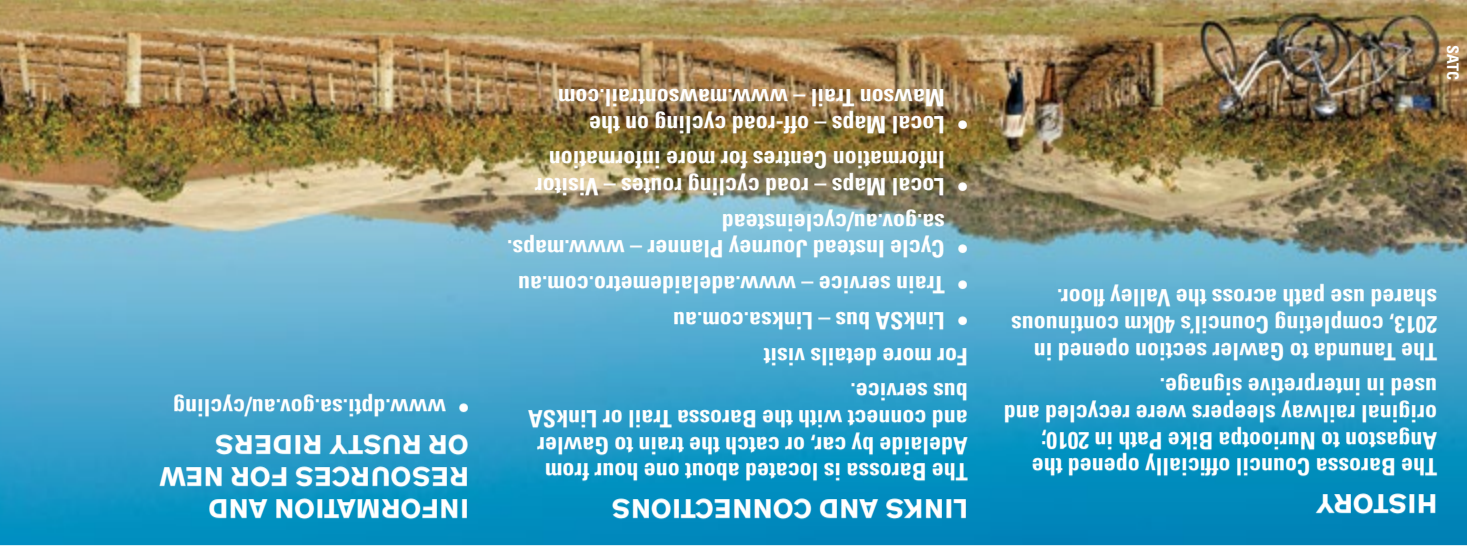
Angaston is one of the region's highest townships and home to a variety of cafes, a bike shop, cheesemaker, Italian cooking school, wine bars, cellar doors, B&Bs and boutique retailers.

People venturing off the path will discover many attractions for visitors and families, including Barossa Bushgardens native plant nursery and display gardens, Mengler Hill Sculpture Park, Barossa Farmers Market (held each Saturday morning) and a variety of cellar doors.

Offering ample parking, the historic Angaston Railway Station was completed in 1911 and is listed as a State Heritage Place. From here it's an easy descent to Nuriootpa, affording panoramic views over the Valley floor and rolling vineyards that symbolise the Barossa.

Home to a variety of cafes, a bike shop, cheesemaker, Italian cooking school, wine bars, cellar doors, B&Bs and boutique retailers.

Angaston is one of the region's highest townships and home to a variety of cafes, a bike shop, cheesemaker, Italian cooking school, wine bars, cellar doors, B&Bs and boutique retailers.



SATC

HISTORY

The Barossa Council officially opened the Angaston to Nuriootpa Bike Path in 2010. Adelaide by car, or catch the train to Gawler and connect with the Barossa Trail or LinkSA bus service.

The Barossa is located about one hour from Angaston to Nuriootpa Bike Path in 2010, Adelaide by car, or catch the train to Gawler and connect with the Barossa Trail or LinkSA bus service.

For more details visit www.adelaidemetro.com.au

Train service – www.adelaidemetro.com.au

Cycle Instead Journey Planner – www.maps.sa.gov.au/cycleinstead

Local Maps – road cycling routes – Visitor Information Centres for more information

Local Maps – off-road cycling on the Mawson Trail – www.mawsontrail.com

The Tanunda to Gawler section opened in 2013, completing Council's 40km continuous shared use path across the Valley floor.

used in interpretive signage.

The Tanunda to Gawler section opened in 2013, completing Council's 40km continuous shared use path across the Valley floor.

Lyndoch to Gawler (13KM)

Established in 1837, Lyndoch is one of South Australia's oldest towns and home to a number of boutique, family-owned vineyards and cellar doors. The town boasts traditional artisans, restaurants and cafes offering authentic German-style meals, smallgoods, freshly baked pies and sweet delights. The route travels through the Lyndoch Hill Rose Garden.

Pristine conservation and recreation parks near Sandy Creek and Cockatoo Valley provide excellent bushwalking and sightseeing opportunities – don't forget the camera!

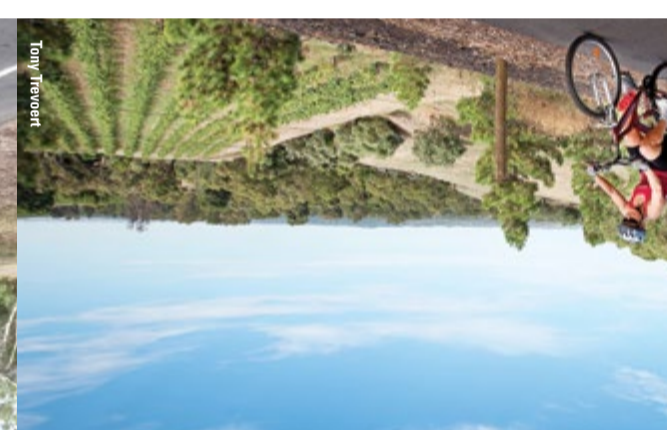
Gawler is the final destination on the Barossa Trail, where heritage charm meets contemporary conveniences to create a thriving retail and commercial centre. An extensive linear path follows Gawler's natural river corridor, and a short distance away is the Northern Expressway and Stuart O'Grady Velowaywineries, Tanunda Pines Golf Club and high-end accommodation, providing a myriad of options for locals and holiday-makers alike.

Altona Landcare Reserve is a must-see for nature lovers before making the picturesque descent into Lyndoch. The route features an array of restaurants, vine plantings in 1847 and an ultramodern cellar door offering cycle hire and facilities.

Midway between Tanunda and Lyndoch is Rowland Flat, best known for its proximity to Jacob's Creek – the site of the Barossa's first commercial winery, along with a collection of well-known wineries and cellar doors to break the journey.

the backdrop of the Barossa Ranges. Kangaroos, echidnas and birdlife towerning guns give way to sweeping vistas and vineyards, against natural terrain. Every turn offers a new surprise as Trail showcases some of the state's most beautiful Varying in its degree of difficulty, this leg of the Barossa TANUNDA TO LYNDCH (14KM)

21% 24% 55%



GRAVEL ROAD RIDES

LAVENDER FARM LOOP (14km)

The loop traverses the foothills of the Barossa Ranges and is an undulating ride linking Barossa Helicopters, Lyndoch Lavender Farm, Dairyman's Cottage farm accommodation, God's Hill Wines and Dutschke Wines. This loop can be linked to the Steingarten Loop for a longer and more challenging ride.

27% 20% 53%

MAWSON TRAIL MEANDER (10km)

This linear ride can supplement the Barossa Trail to make a loop by following a ridgeline on the Western Barossa rim. While there are some short climbs to get up onto the rim the ride then becomes a series of steady rises that will reward you with some of the best views of the Barossa's rural landscape. This ride connects Tanunda via Smith Road or Jane Place.

30% 22% 48%

GOMERSAL LOOP (11km)

Linking Lyndoch to Seppeltsfield, this route takes you off the normal tourist routes using local farm roads that feature broad acres and big skies. Autumn through to late Spring are the best times to experience this route, however if you venture off this route in Winter you are likely to get stuck in the mud if you use Hoklas Road so a detour onto Gomersal Road is recommended.

41% 15% 44%

STEINGARTEN LOOP (10km)

Perched on top of a hill is the famous Steingarten vineyard. Steingarten or 'Stone Garden' is a hint of the features of this Hill-top look out providing expansive landscape views of the Western Barossa and the Jacob's Creek catchment. This loop is for the fit and more adventurous and can be subject to wind exposure so check the weather before you ride. Either direction will involve some challenging climbs and fast descents. Cycling the loop in a clockwise direction via Steingarten Road from Rowland Flat is easier than via Trial Hill Road which is an appropriate name. Either direction links to the Barossa Trail.

12% 26% 62%

TRAIL GRADES

- EASY** – Suitable for novice cyclists, families and others seeking a flat cycling terrain. Any type of bike is suitable and the route is predictable.
- INTERMEDIATE** – Undulating ride that requires a multi-geared bike and some self confidence in bike handling skills. Some cycling experience is needed.
- ADVANCED** – Some challenging climbs and descents requiring good bike handling skills and a good level of fitness.

VISITOR INFORMATION

BAROSSA VISITOR CENTRE
66-68 Murray Street, Tanunda
(08) 8563 8334 or 1300 852 982
visitorcentre@barossa.sa.gov.au
Open Mon to Fri 9am-5pm
Saturday 9am-4pm, Sunday 10am-4pm
Public holidays 10am-4pm
Closed Christmas Day & Good Friday

GAWLER VISITOR INFORMATION CENTRE
2 Lyndoch Road, Gawler
(08) 8522 9260
visitorcentre@gawler.sa.gov.au
Open weekdays 9am-5pm
Saturdays 10am-4pm
Sundays & public holidays 10am-2pm
Closed Christmas Day & Good Friday

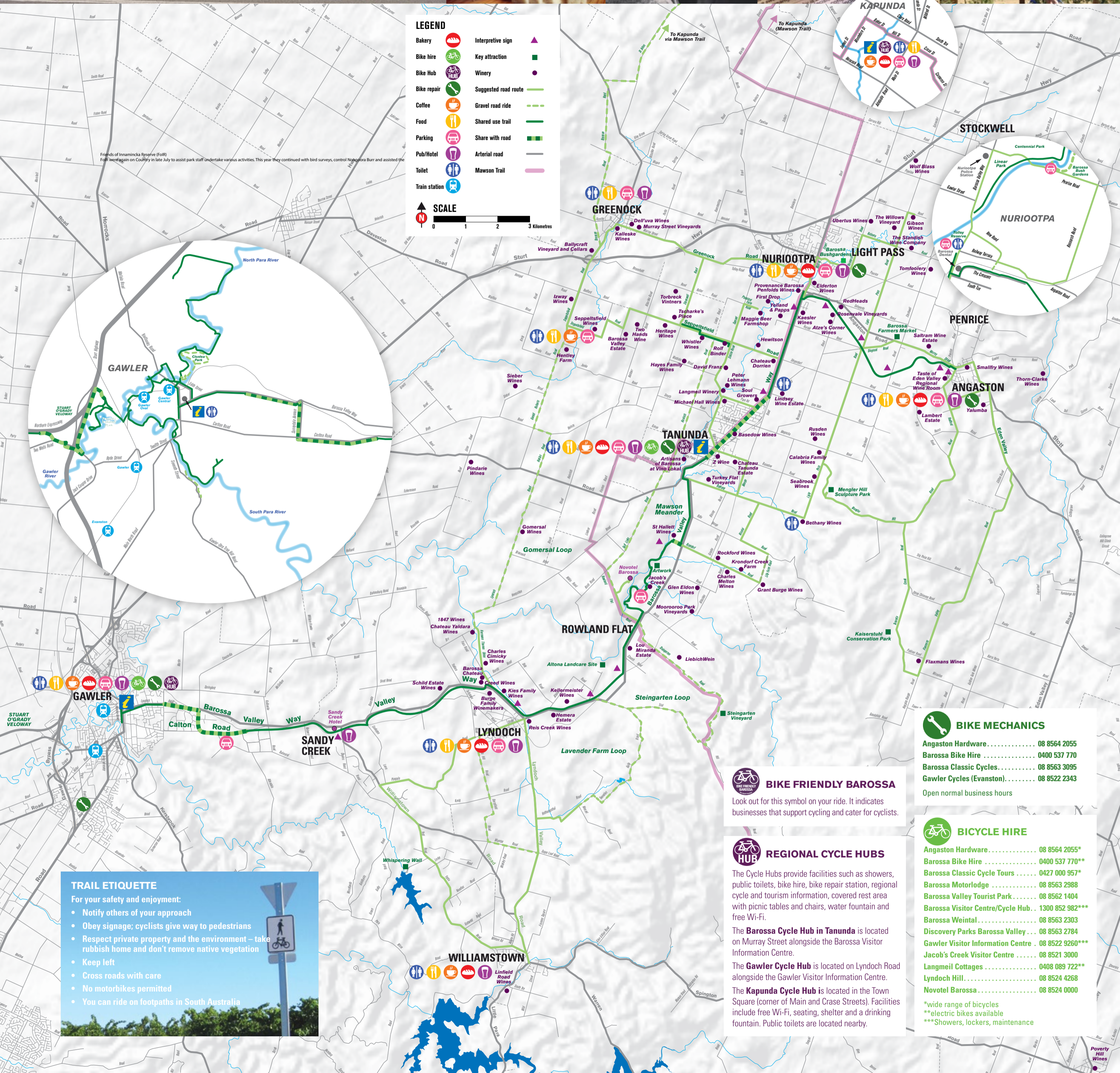
KAPUNDA VISITOR INFORMATION CENTRE & INTERPRETIVE DISPLAY
51-53 Main St, Kapunda
(08) 8566 2902 or 1300 770 301
visitorcentre@light.sa.gov.au
Open weekdays 9am-5pm
Weekends & public holidays 10am-4pm
Closed Christmas Day & Good Friday

Stay in contact – join us at MY BAROSSA

Scan QR code to 'like' My Barossa on facebook

BAROSSA AUSTRALIA

Proudly supported by

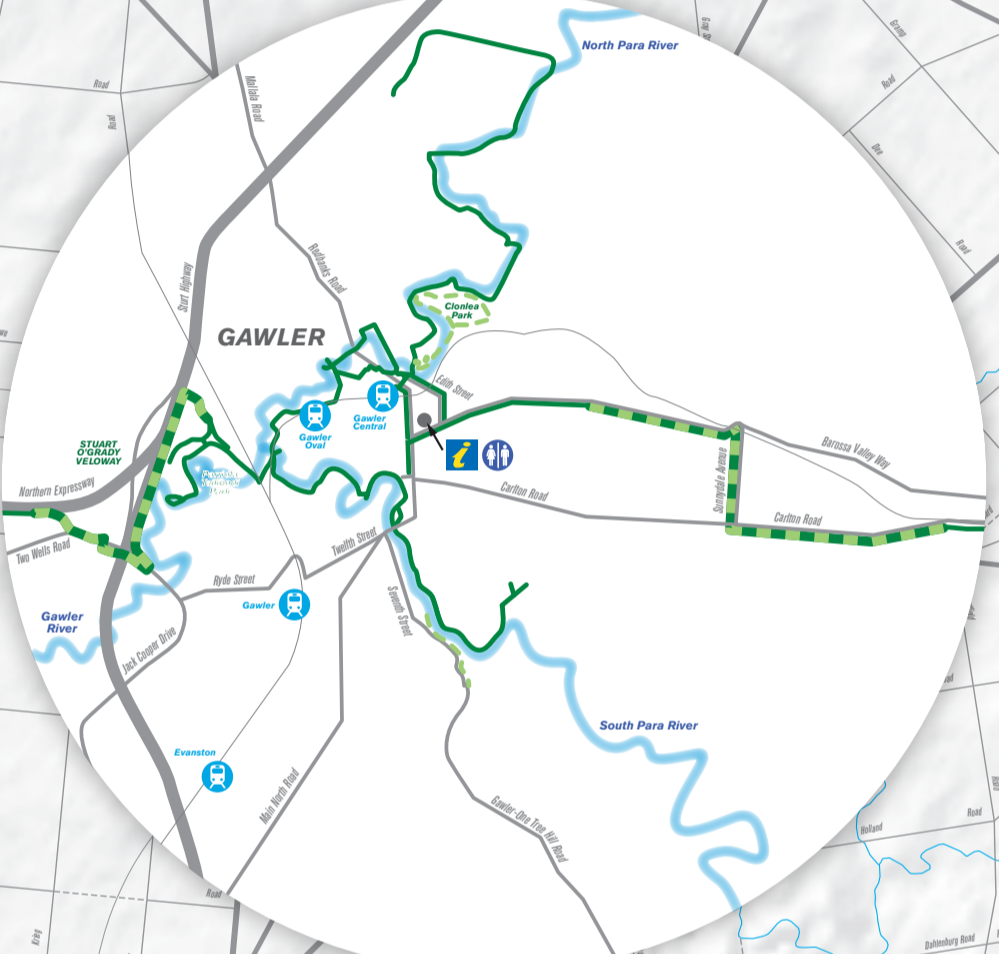


LEGEND

Bakery		Interpretive sign	
Bike hire		Key attraction	
Bike Hub		Winery	
Bike repair		Suggested road route	
Coffee		Gravel road ride	
Food		Shared use trail	
Parking		Share with road	
Pub/Hotel		Arterial road	
Toilet		Mawson Trail	
Train station			

SCALE

0 1 2 3 Kilometres



TRAIL ETIQUETTE

For your safety and enjoyment:

- Notify others of your approach
- Obey signage; cyclists give way to pedestrians
- Respect private property and the environment – take rubbish home and don't remove native vegetation
- Keep left
- Cross roads with care
- No motorbikes permitted
- You can ride on footpaths in South Australia

BIKE MECHANICS

Angaston Hardware	08 8564 2055
Barossa Bike Hire	0400 537 770
Barossa Classic Cycles	08 8563 3095
Gawler Cycles (Evanston)	08 8522 2343

Open normal business hours

BIKE FRIENDLY BAROSSA

Look out for this symbol on your ride. It indicates businesses that support cycling and cater for cyclists.

REGIONAL CYCLE HUBS

The Cycle Hubs provide facilities such as showers, public toilets, bike hire, bike repair station, regional cycle and tourism information, covered rest area with picnic tables and chairs, water fountain and free Wi-Fi.

The **Barossa Cycle Hub** in Tanunda is located on Murray Street alongside the Barossa Visitor Information Centre.

The **Gawler Cycle Hub** is located on Lyndoch Road alongside the Gawler Visitor Information Centre.

The **Kapunda Cycle Hub** is located in the Town Square (corner of Main and Crase Streets). Facilities include free Wi-Fi, seating, shelter and a drinking fountain. Public toilets are located nearby.

BICYCLE HIRE

Angaston Hardware	08 8564 2055*
Barossa Bike Hire	0400 537 770**
Barossa Classic Cycle Tours	0427 000 957*
Barossa Motorlodge	08 8563 2988
Barossa Valley Tourist Park	08 8562 1404
Barossa Visitor Centre/Cycle Hub	1300 852 982***
Barossa Weintal	08 8563 2303
Discovery Parks Barossa Valley	08 8563 2784
Gawler Visitor Information Centre	08 8522 9260***
Jacob's Creek Visitor Centre	08 8521 3000
Langmeil Cottages	0408 089 722**
Lyndoch Hill	08 8524 4268
Novotel Barossa	08 8524 0000

*wide range of bicycles
**electric bikes available
***Showers, lockers, maintenance